



Contact: Laura Worker
Marketing Manager
Westfalia Technologies, Inc.
717.764.1115, ext. 111
lworker@westfaliaUSA.com



For immediate release

**Savanna.NET® Warehouse Management Software
Version 2.2 Available in June 2010**

Westfalia's WMS Increasingly Efficient & User-Friendly

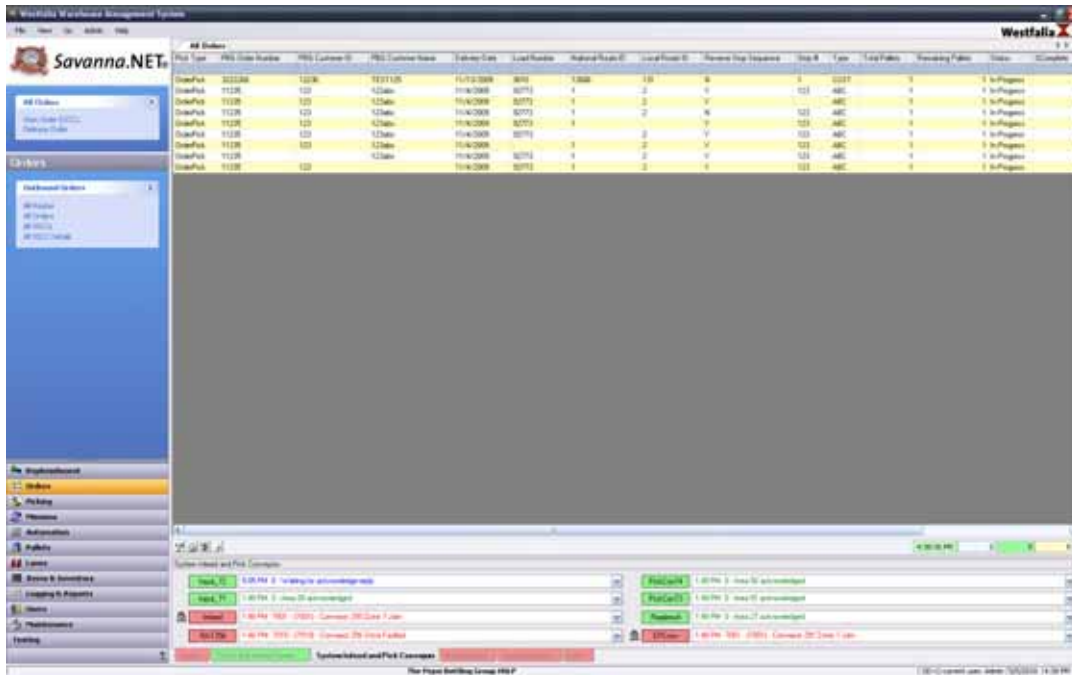
YORK, Pa., May 13, 2010 – Westfalia Technologies Inc. is launching *Savanna.NET*® Version 2.2 in June 2010. This latest version of Savanna offers a standard interface allowing Westfalia's WMS to "talk" with any Enterprise Resource Program (ERP) system; a faster, more efficient storage locator algorithm; and visible changes to the client user screens to make the client interface more user-friendly.

The new and improved standard host interface of *Savanna 2.2* controls the items, orders, customers and inventory segments of the WMS, and provides standard integration of these segments to any ERP system (SAP, Oracle, Navision, Ross, etc.) While this is a 'behind the scene' improvement not immediately visual to a user, the standardization of this interface provides for more rapid WMS installation, which is of vital importance to customers.

The refinement of the "find storage location" algorithm is another behind the scenes improvement of *Savanna 2.2*. While it too is not necessarily visible to a user, the increased speed and efficiency of storing and retrieving pallets/totes becomes apparent in the daily/monthly reporting of the inventory and order processing.

“As our customer’s needs have become more complex we are looking for ways to make day to day operation of a warehouse easier,” explains Dave Williams, Director of Software Development.

Lastly, there are significant improvements to the WMS user screens, which Westfalia calls the ‘WMS Client.’ *Savanna 2.2* users are able to rename and reorganize columns thereby allowing them to sort the inventory movement information in whatever manner they prefer. Enhancements to the ‘system status’ window present more efficient screen usage while also processing the information more efficiently. In general, the refinements make the *Savanna* WMS Client more user-friendly.



Look for more visualization improvements in the next version of *Savanna*, 2.3 due to launch at the end of 2010.

To learn more about *Savanna*.NET® Warehouse Management Software for conventional and automated warehouses, contact Westfalia at 800-673-2522 or visit www.savanna.com.

About Westfalia Technologies, Inc. (www.WestfaliaUSA.com)

Westfalia Technologies, Inc. is a leader in providing logistics solutions for plants, warehouses and distribution centers. Their expertise in combining software (WMS) development with automated equipment manufacturing reveals Westfalia's ability to deliver turn-key solutions to meet each client's specific needs with unsurpassed quality and control. To learn more about Westfalia's products, including Conveyors, Automated Storage and Retrieval Systems (AS/RS) and *Savanna*.NET® Warehouse Management Systems, visit www.WestfaliaUSA.com.

#