



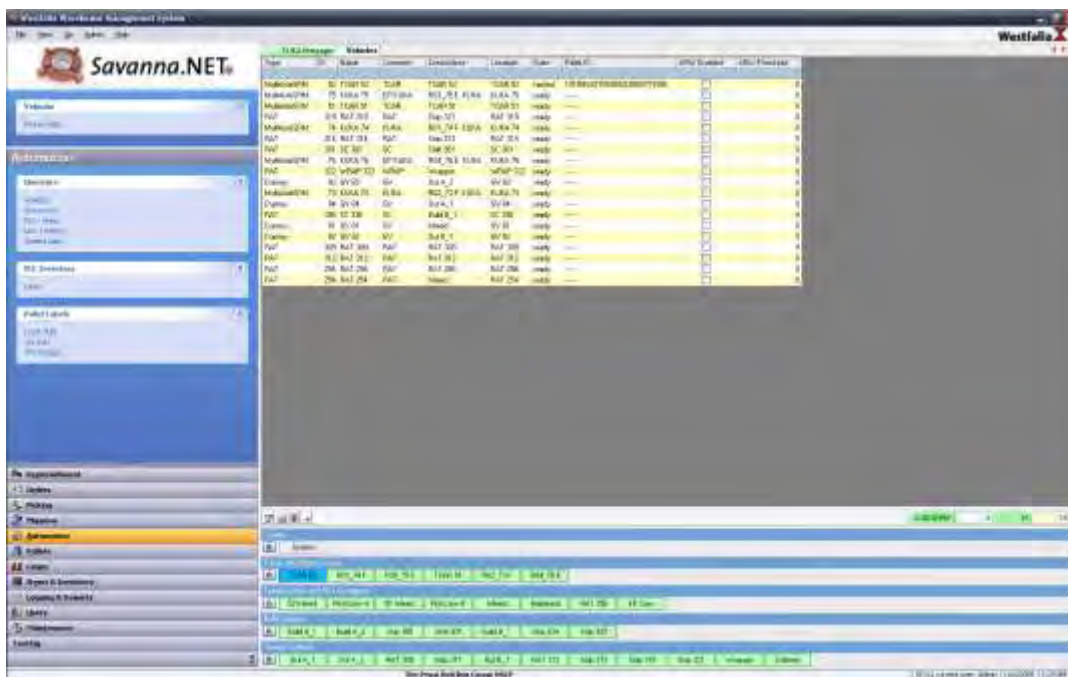
business environments, including conventional or fully automated facilities. The system can be fully modified based on each customer's individual logistics requirements, integrated into new or existing structures, and features user-friendly tabbed data grid operation. Starting with a set of basic functions, customers can select only the modules they need now, and have the flexibility to add on modules in the future as their business needs change.



Westfalia launched *Savanna.NET*® Version 2.3 in March 2011. Key features of *Savanna* 2.3 include real time 3D visualization of the warehouse; a dashboard for tracking key statistics of warehouse operations; streamlined user rights management interfaces; and improvements to the order picking module for integrating third party picking solutions (i.e.; high speed layer picking and mixed layer picking).

*Savanna* 2.3's 3D Visualization allows users to view the warehouse from any angle, including walking through it. Individual items/SKUs can be identified and filtered (for example inventory can be colored by SKU), as can warehouse zones. Like all other aspects of *Savanna*, this 3D Visualization module is flexible enough to be integrated into warehouses controlled by other WMS's, where *Savanna* WCS is used.

Stop by Westfalia's booth #3611 at MODEX 2012 to see *Savanna.NET*® WMS Version 2.3 in action, personal demonstrations are available at any time throughout the show. Additionally, contact Westfalia at 800-673-2522 or visit [www.WestfaliaUSA.com](http://www.WestfaliaUSA.com) or [www.Savanna.com](http://www.Savanna.com).



**About Westfalia Technologies, Inc. ([www.WestfaliaUSA.com](http://www.WestfaliaUSA.com))**

Westfalia Technologies, Inc. is a leader in providing logistics solutions for plants, warehouses and distribution centers. Our expertise combining software (WMS) development with machinery manufacturing reveals Westfalia's ability to deliver turn-key solutions to meet each client's specific needs with unsurpassed quality and control. Every day we reduce inventory, labor and shipping costs, as well as improve throughput and accuracy for a wide range of businesses. Westfalia's products include Automated Storage and Retrieval Systems (AS/RS), *Savanna*.NET® Warehouse Management Systems, conventional and DeepLane™ pallet flow systems, conveyors, order pick systems, layer forming palletizers, automated parking systems and stainless steel case packing, stacking and handling equipment.

**About *Food Logistics***

*Food Logistics* is the only publication exclusively dedicated to covering the movement of product throughout all channels of the supply chain. *Food Logistics* serves the information needs of food, beverage and consumer packaged goods executives involved in warehousing, transportation and information technology, as well as third-party and refrigerated service providers. Through our print and online products, we provide news, trends and best practices that help more than 24,000 grocery and foodservice suppliers, distributors and retailers make better business decisions. On the web at [www.foodlogistics.com](http://www.foodlogistics.com).